

**Finally!**

**STC 60-63**

# **Recording Studio Windows & Doors** *with STC Ratings in the 60's*



Photo of MonkMusic Studios - designed by John Storyk - photo by Daniel Gonzales

# Studio Window Max™

by Soundproof Windows, Inc.

## STC 60 to 63

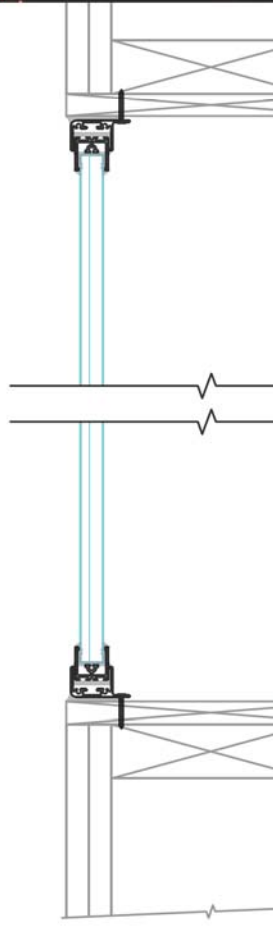
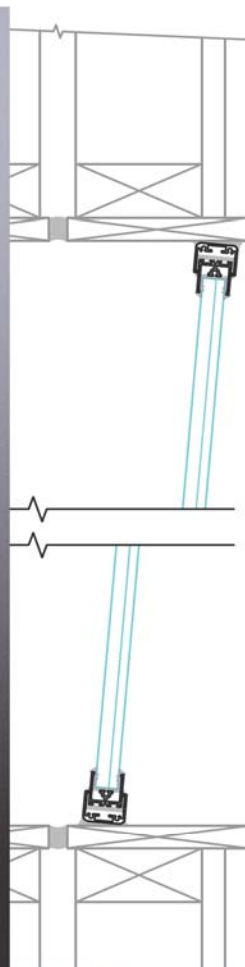
- Easy to Install
- Slanted Glass is field adjustable
- Complete Architectural Drawings
- Full Specimen 6' by 4' Acoustical Lab Tested

**Slanted or Vertical Windows:** Our studio windows consist of two independent fixed windows on each side of your window opening. One window is vertical and the second one can be installed vertically or slanted – your choice at the time of installation. We tested our window in a 10.5" wall (overall thickness) with the window slanted back 5.0" and achieved an STC of 61. For the 8.0" wall we had a setback of 3.0" and it also got an STC value of 61. The window angle is easily adjusted during the installation. With both windows mounted vertically, we achieved STC values of 61 to 62.

**Operable Sliding Windows:** Two sliding windows allow you to open up between the two rooms and have more personable direct discussions while not recording. Not previously available in a high STC window, but now available for those wanting this new approach. Think of it, an opening pair of windows that still have STCs between 62 and 63 – an option never possible previously.



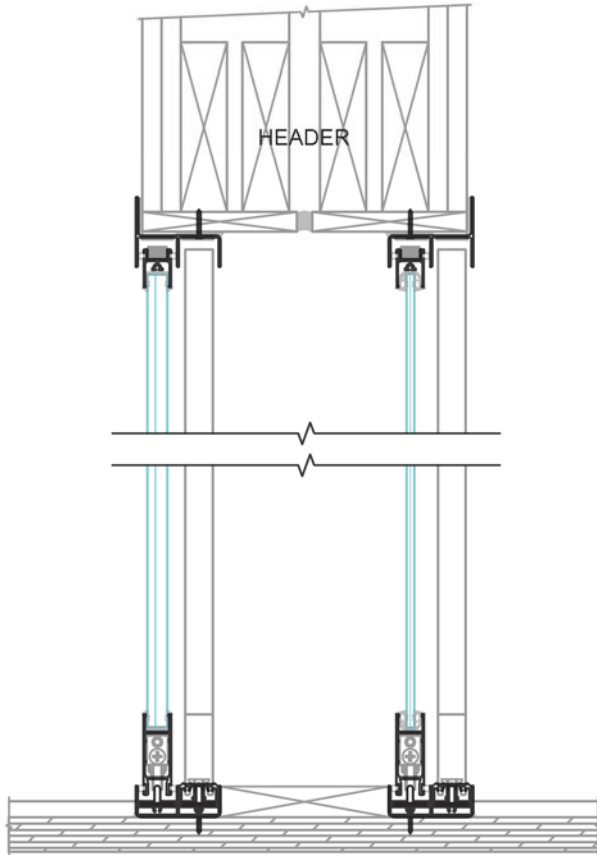




# Studio Door Max<sup>TM</sup>

*by Soundproof Windows, Inc.*

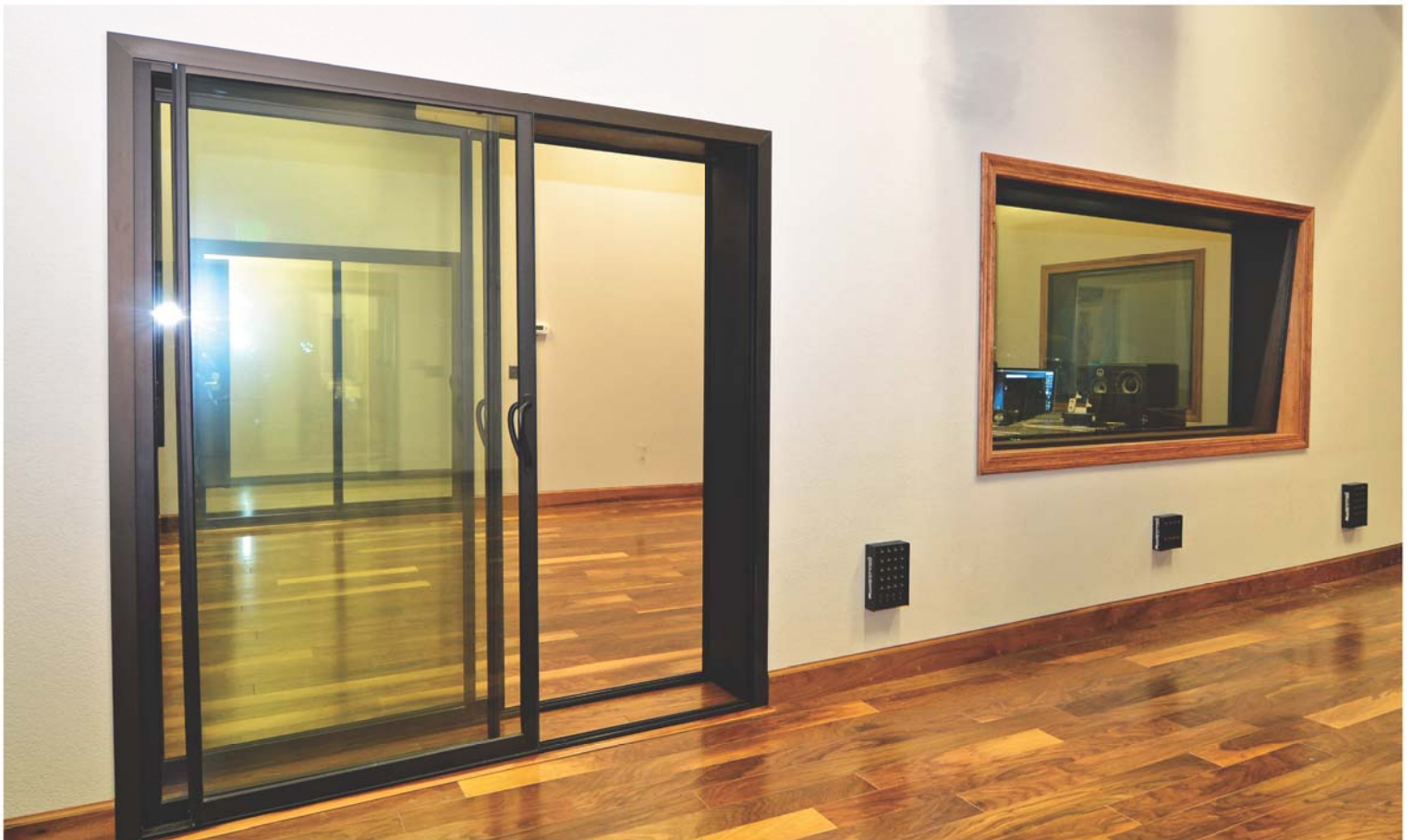
## STC 62 to 63



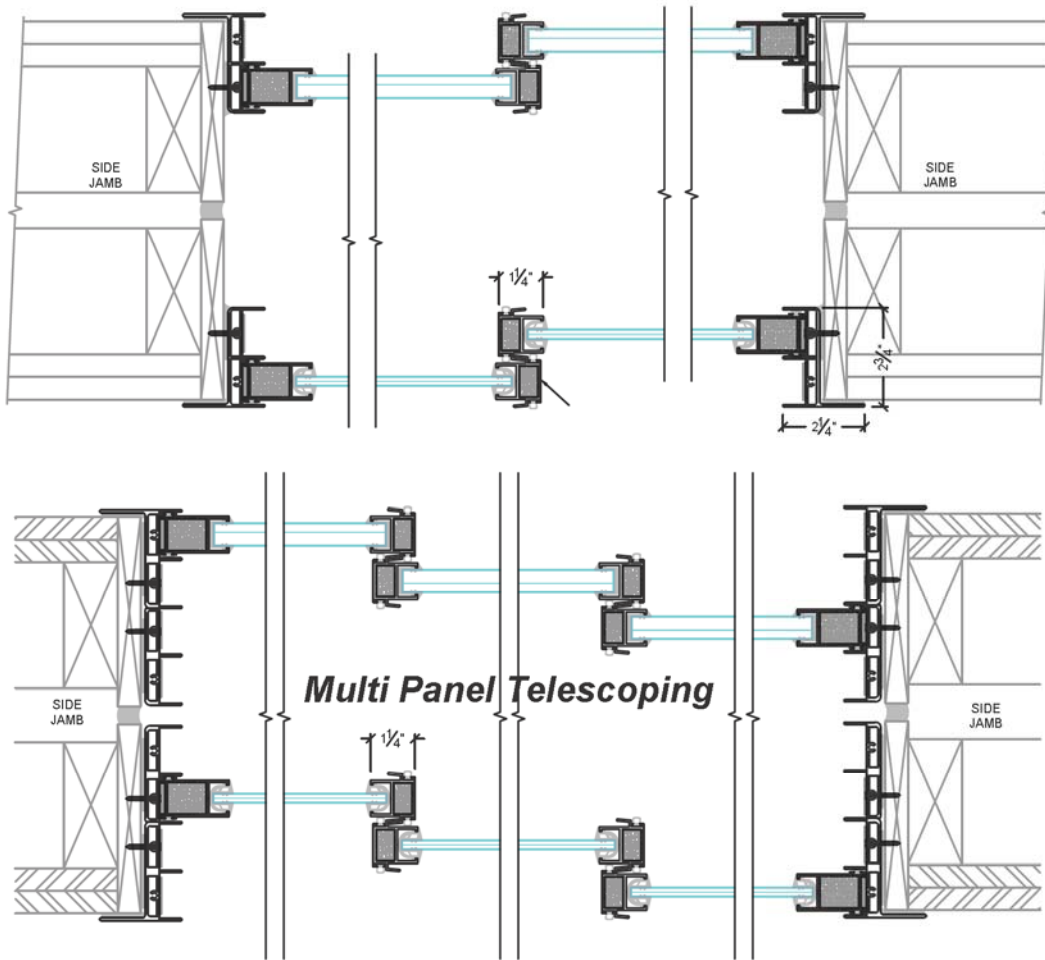
10.5" WALL CONSTRUCTION

- Incredible low frequency noise reduction
- No swing in or swing out obstructions
- All panels are removable, so you can utilize the full door opening width when needed
- Audience viewing easily accommodated

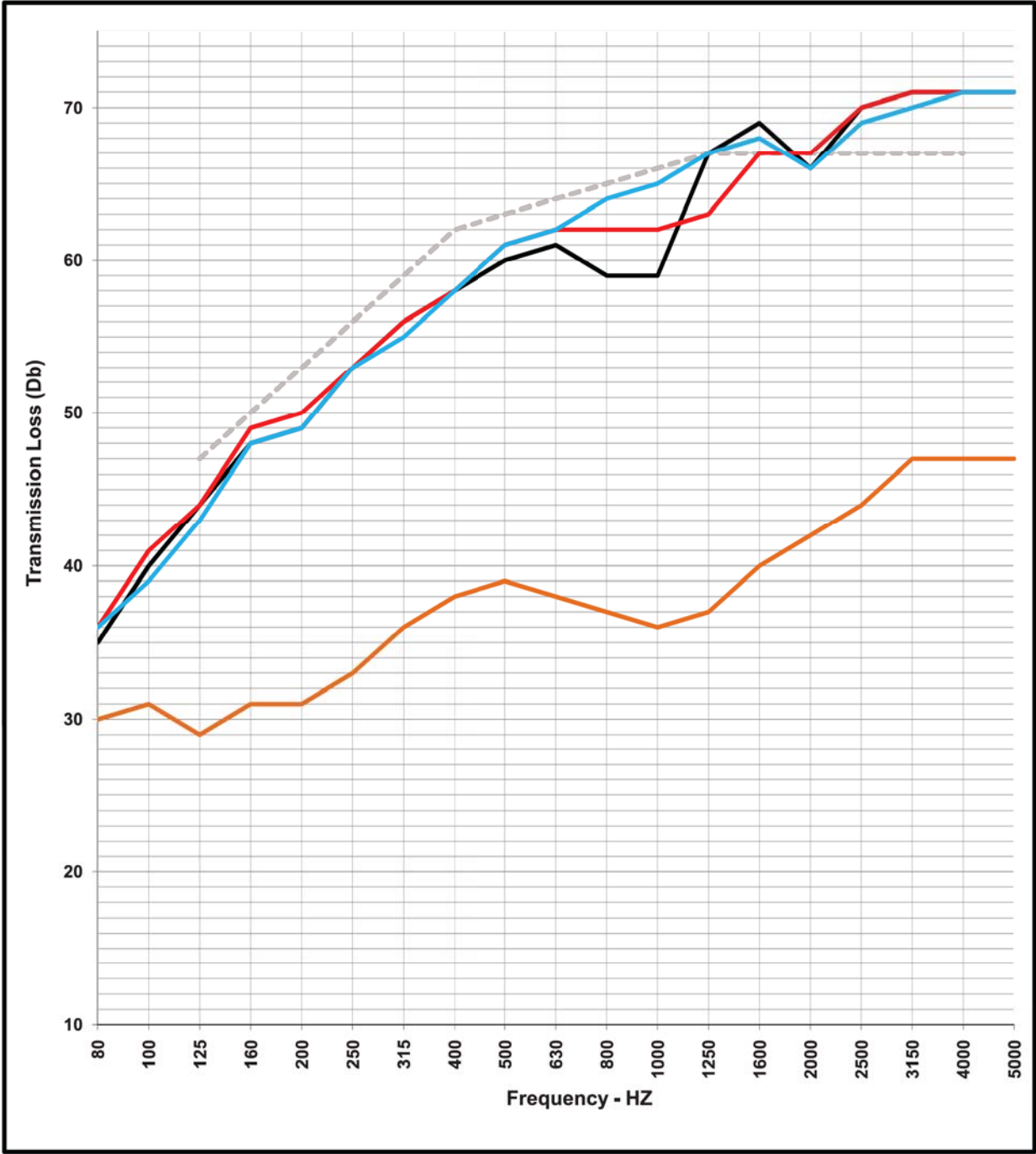
**Two sliding glass doors mounted on each side of your door opening.** The doors can be mounted inside the opening or outside of the door opening (see drawings). An 8.0 inch thick wall can provide an overall installed door thickness ranging from 8.0 to 11.0 inches. All of the door panels are removable, meaning you can use the entire opening to move oversized items (Grand Pianos?) into the recording area easily.







# Operable Studio Windows



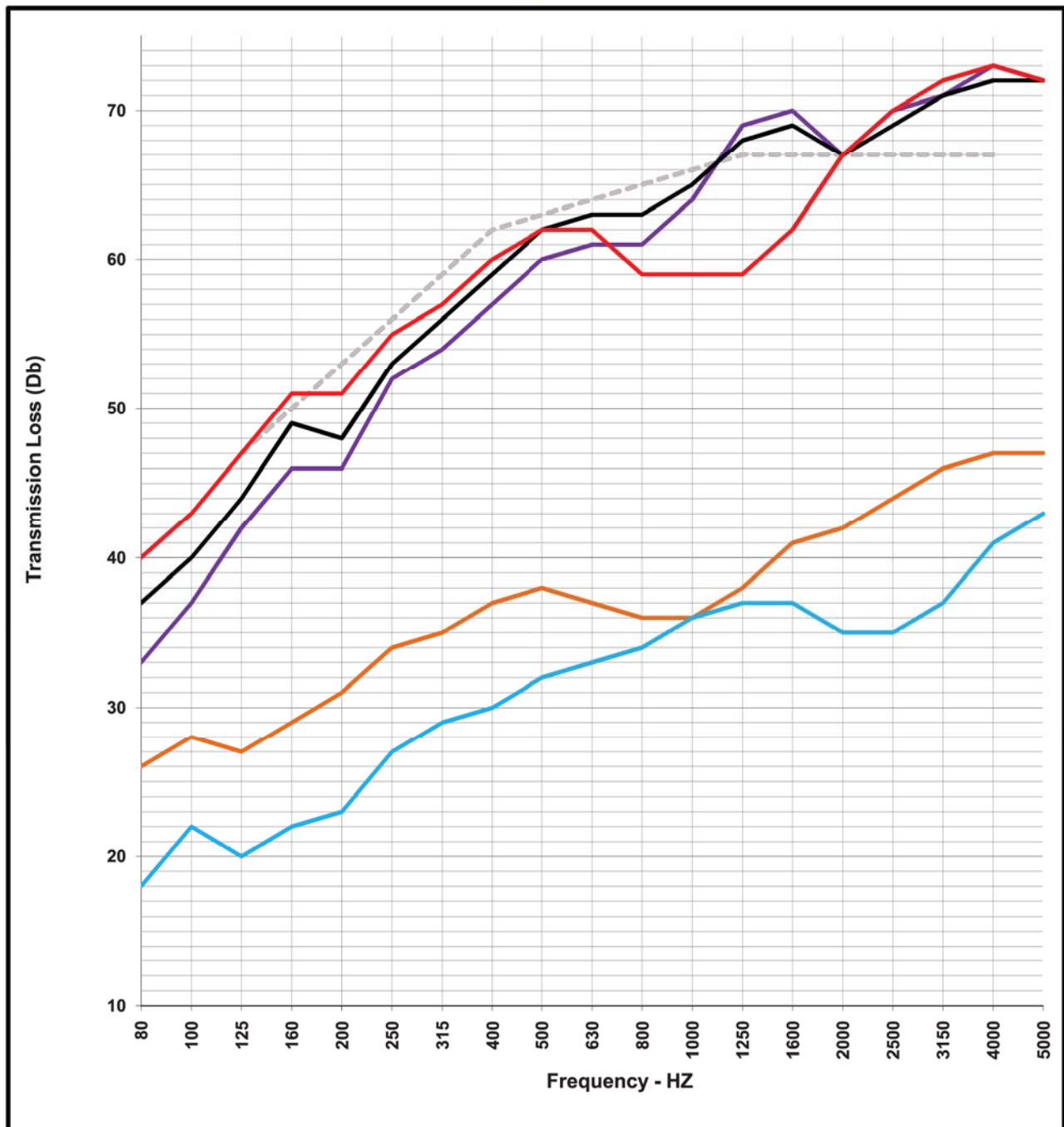
Operable Studio Window Test Results (72.0" x 48.0")

1/3 Octave Band (HZ)	STC	OITC	80	100	125	160	200	250	315	400	500	630	800	1000	1250	1600	2000	2500	3150	4000	5000	Certified Western Acoustical Lab (WEAL) Test Nbr
63 STC Curve																						
Single Window 5/8"	40	36	30	31	29	31	31	33	36	38	39	38	37	36	37	40	42	44	47	47	47	TL10-548
5/8" + 5/8" @ 8.0"	62	51	35	40	44	48	49	53	56	58	60	61	59	59	67	69	66	70	71	71	71	TL10-552
5/8" + 5/8" @ 11"	63	52	36	41	44	49	50	53	56	58	61	62	62	62	63	67	67	70	71	71	71	TL10-550
5/8" + 1/4" @ 11"	63	51	36	39	43	48	49	53	55	58	61	62	64	65	67	68	66	69	70	71	71	TL10-553

More detailed description:

- Window with 5/8 Lami : One window with our 5/8" laminated glass
- Windows 5/8 + 1/4 @ 11.0" : Window pair - one 5/8" laminated glass plus one 1/4" laminated glass - frames mounted in 11" total depth
- Windows 5/8 + 5/8 @ 11.0" : Window pair - both with 5/8" laminated glass - frames mounted in 11" total depth
- Windows 5/8 + 5/8 @ 8.0" : Window pair - both with 5/8" laminated glass - frames mounted in 8" total depth

# Studio Sliding Glass Doors



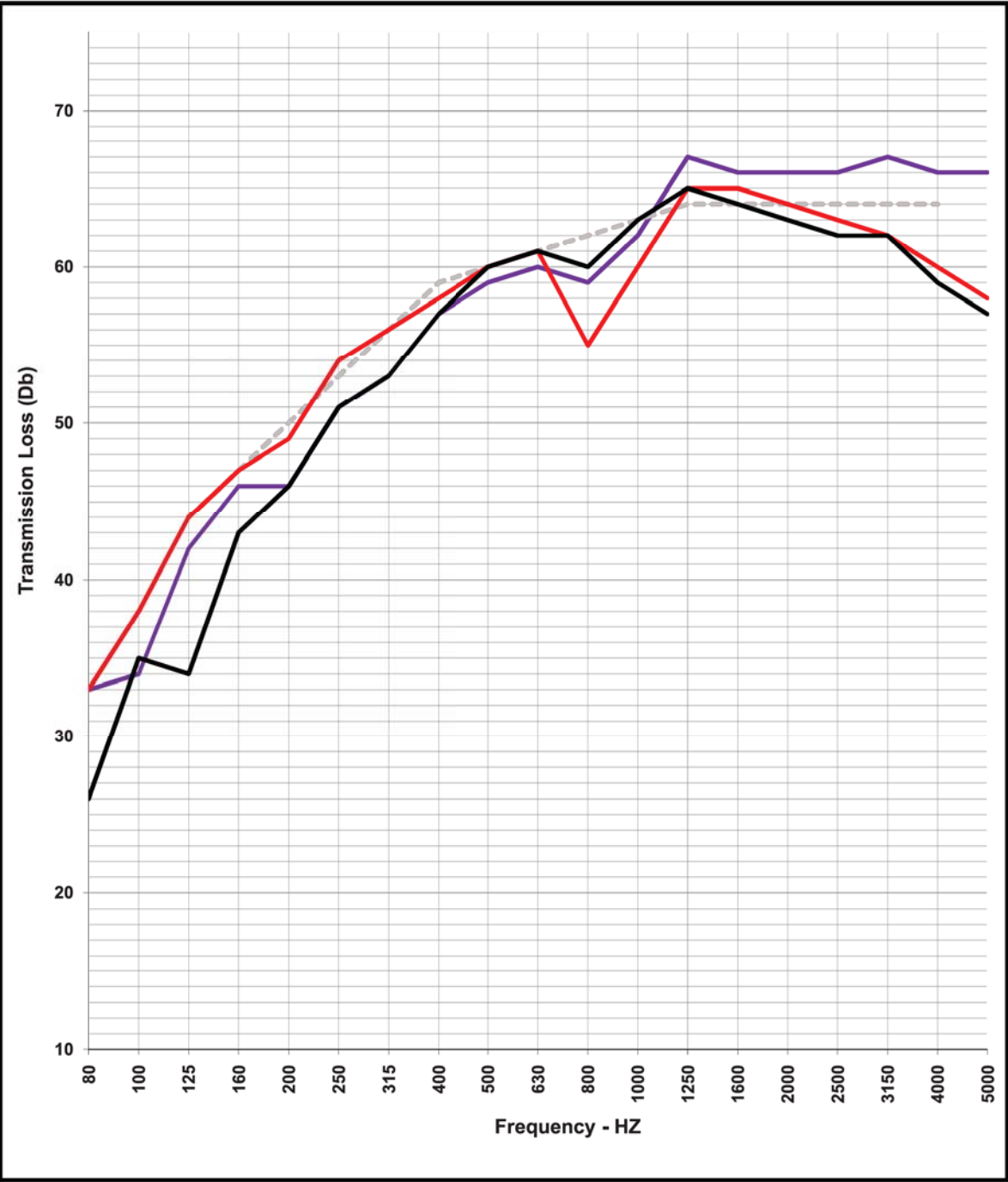
### Studio Sliding Glass Door Results

1/3 Octave Band (HZ)	STC	OITC	80	100	125	160	200	250	315	400	500	630	800	1000	1250	1600	2000	2500	3150	4000	5000	Certified Western Acoustical Lab (WEAL) Test Nbr
63 STC Curve					47	50	53	56	59	62	63	64	65	66	67	67	67	67	67	67	67	
SGD with 5/8 Lami	39	35	26	28	27	29	31	34	35	37	38	37	36	36	38	41	42	44	46	47	47	TL10-561
SGDs 5/8 + 1/4 @ 8.0"	62	49	33	37	42	46	46	52	54	57	60	61	61	64	69	70	67	70	71	73	72	TL10-563
SGDs 5/8 + 1/4 @11.0"	63	52	37	40	44	49	48	53	56	59	62	63	63	65	68	69	67	69	71	72	72	TL10-562
SGDs 5/8 + 5/8 @11.0"	62	54	40	43	47	51	51	55	57	60	62	62	59	59	59	62	67	70	72	73	72	TL10-564
SGD with 1/4 Lami	34	29	18	22	20	22	23	27	29	30	32	33	34	36	37	37	35	35	37	41	43	TL10-558

#### More detailed description:

- SGD with 5/8 Lami : One door with 5/8" laminated glass
- SGDs 5/8 + 1/4 @ 8.0" : Pair of doors - one with 5/8" laminated glass plus one with 1/4" laminated glass - frames mounted in 8" total depth
- SGDs 5/8 + 1/4 @11.0" : Pair of doors - one with 5/8" laminated glass plus one with 1/4" laminated glass - frames mounted in 11" total depth
- SGDs 5/8 + 5/8 @11.0" : Pair of doors - both with 5/8" laminated glass - frames mounted in 11" total depth
- SGD with 1/4 Lami : One door with 1/4" laminated glass

# Slanted Studio Windows



Slanted Studio Window Test Results (72.0" x 48.0")

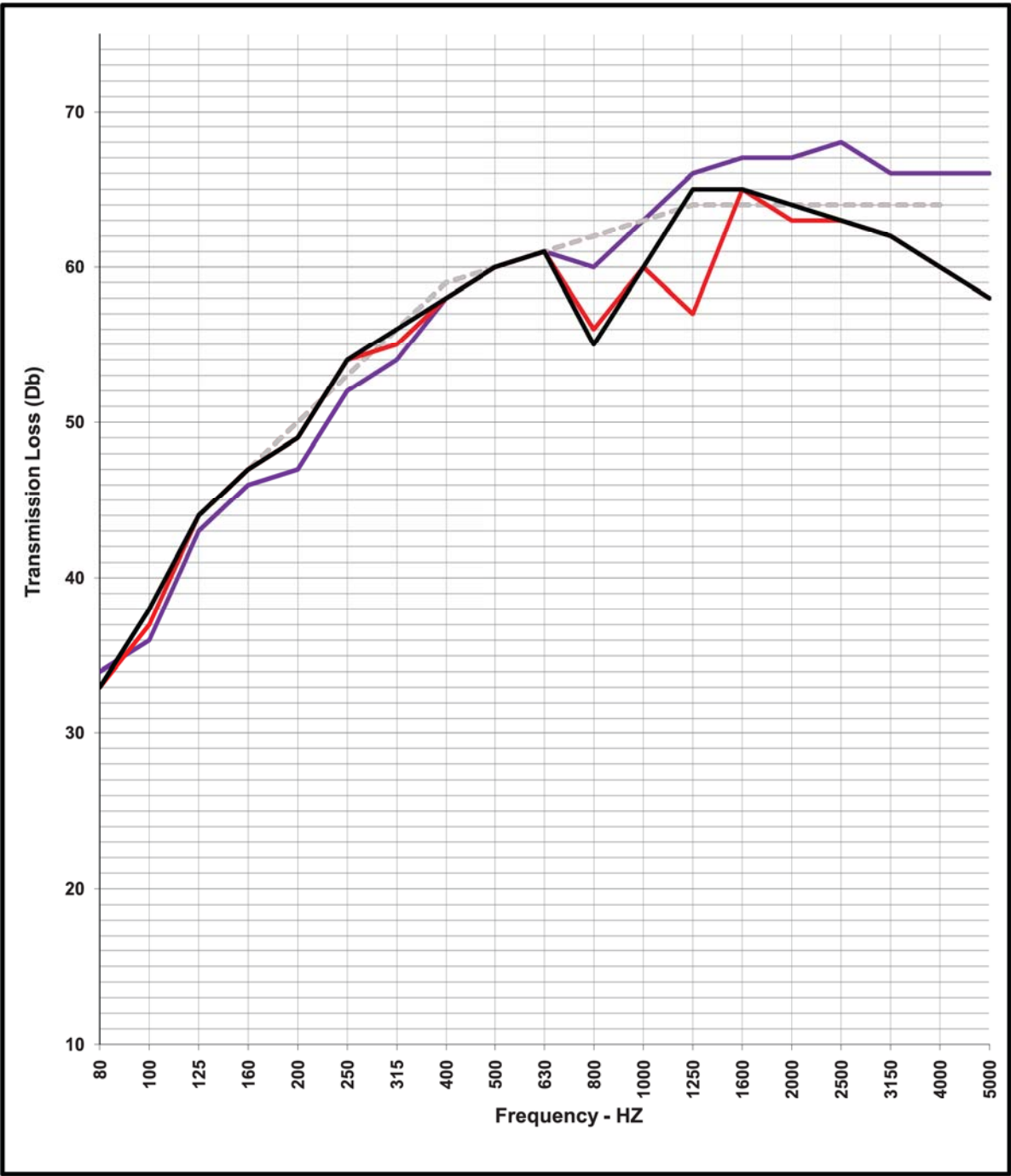
1/3 Octave Band (HZ)	STC	OITC	80	100	125	160	200	250	315	400	500	630	800	1000	1250	1600	2000	2500	3150	4000	5000	Certified Western Acoustical Lab (WEAL) Test Nbr
60 STC Curve					44	47	50	53	56	59	60	61	62	63	64	64	64	64	64	64	64	
Windows 5/8 + 5/8 @ 10.25"	61	49	33	38	44	47	49	54	56	58	60	61	55	60	65	65	64	63	62	60	58	TL09-266
Windows 5/8 + 1/4 @ 8.0"	61	47	33	34	42	46	46	51	53	57	59	60	59	62	67	66	66	66	67	66	66	TL09-275
Windows 5/8 + 1/4 @ 10.25"	60	48	26	35	34	43	46	51	53	57	60	61	60	63	65	64	63	62	62	59	57	TL09-267

More detailed description:

- Windows 5/8 + 5/8 @ 10.25" : Window pair - both with our 5/8" laminated glass - slanted 5" past vertical - frames mounted in 10.25" total depth. Second window mounted vertically.
- Windows 5/8 + 1/4 @ 8.0" : Window pair - First with our 5/8" laminated glass slanted 3" past vertical inward - frames mounted in 8" total depth. Second window 1/4" laminated glass
- Windows 5/8 + 1/4 @ 10.25" : Window pair - First with our 5/8" laminated glass slanted 5" past vertical inward - frames mounted in 10.25" total depth. Second window 1/4" laminated glass



# Vertical Studio Windows



Vertical Studio Window Test Results (72.0" x 48.0")

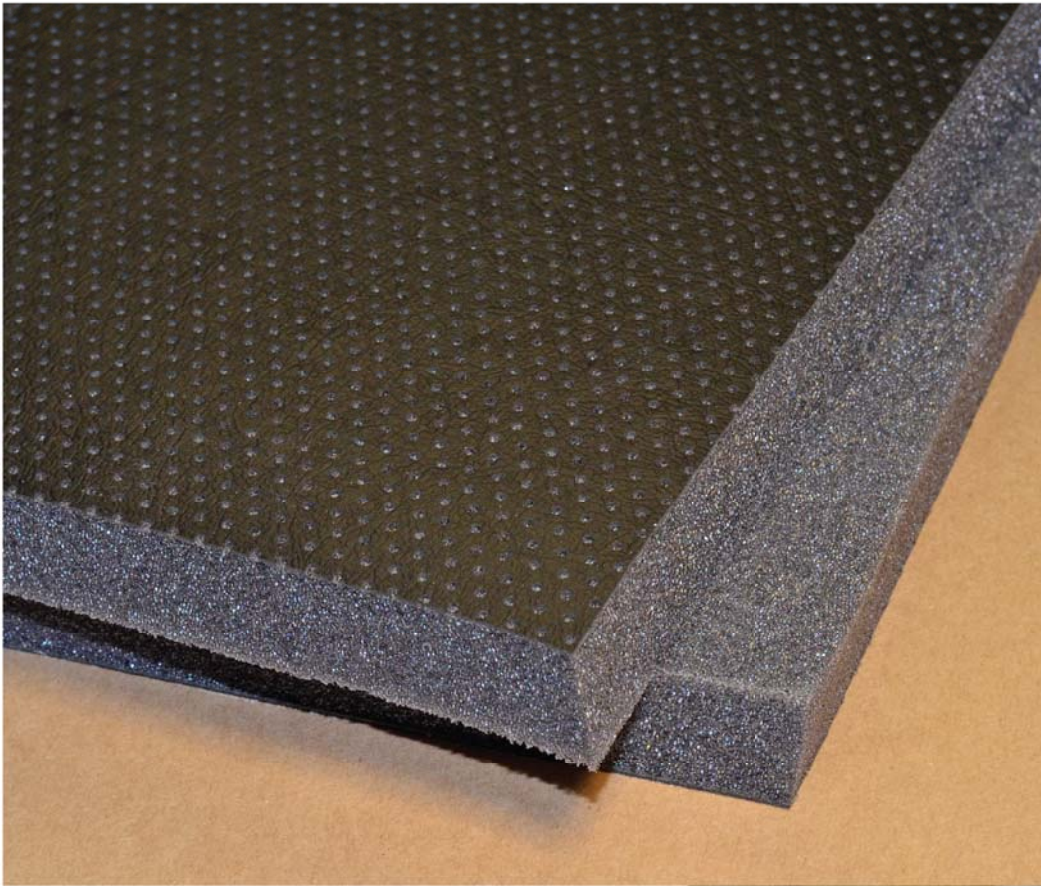
1/3 Octave Band (HZ)	STC	OITC	80	100	125	160	200	250	315	400	500	630	800	1000	1250	1600	2000	2500	3150	4000	5000	
60 STC Curve						44	47	50	53	56	59	60	61	62	63	64	64	64	64	64	64	Certified Western Acoustical Lab (WEAL) Test Nbr
Windows 5/8 + 5/8 @ 10.25"	60	49	33	37	44	47	49	54	55	58	60	61	56	60	57	65	63	63	62	60	58	TL09-265
Windows 5/8 + 1/4 @ 8.0"	62	49	34	36	43	46	47	52	54	58	60	61	60	63	66	67	67	68	66	66	66	TL09-272
Windows 5/8 + 1/4 @ 10.25"	61	49	33	38	44	47	49	54	56	58	60	61	55	60	65	65	64	63	62	60	58	TL09-266

More detailed description:

- Windows 5/8 + 5/8 @ 10.25" : Window pair - both with our 5/8" laminated glass - frames mounted in 10.25"
- Windows 5/8 + 1/4 @ 8.0" : Window pair - First with our 5/8" laminated glass - second with 1/4" laminated glass - frames mounted in 8" total depth.
- Windows 5/8 + 1/4 @ 10.25" : Window pair - First with our 5/8" laminated glass - second with 1/4" laminated glass - frames mounted in 10.25" total depth.

# **NEW** SPW Sound Foam

Sound absorbing foam for between windows and doors.



**NRC .70**  
**SAA .68\***

- **Cost Effective**
- **Easy to Install**
- **Excellent NRC**

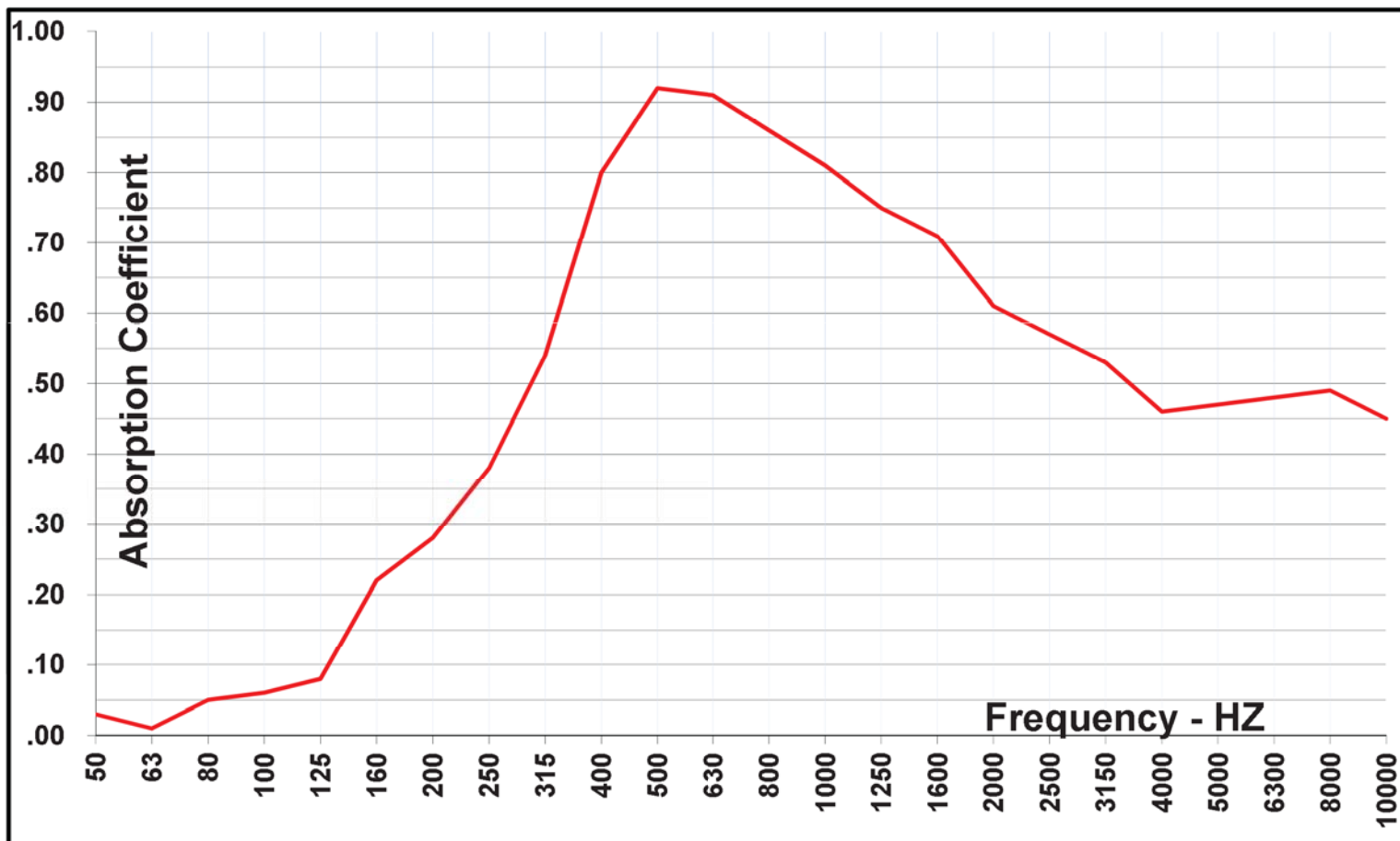
Our **Soundproof Window (SPW) Sound Foam** is a new acoustic absorptive foam designed to enhance our windows and doors. We designed the foam specifically to fill in the space between two windows or two sliding glass doors. It is inexpensive, easy to install, and it is very effective. It is a quick and easy way to treat the space between our windows and doors.



*\*See test results*



# SPW Sound Foam



1/3 Octave Band (HZ)	NRC	SAA	50	63	80	100	125	160	200	250	315	400	500	630	800	1000	1250	1600	2000	2500	3150	4000	5000	6300	8000	10000	NWAA
SPW Sound Foam	.70	.68	.03	.01	.05	.06	.08	.22	.28	.38	.54	.80	.92	.91	.86	.81	.75	.71	.61	.57	.53	.46	.47	.48	.49	.45	NWAA



The lab test results graphed above are very new. It uses the current ASTM NRC test method **and** the new more accurate ASTM SAA test method that is about to be released. The new NWAA Labs test facility accurately tests from 50 Hz to 10,000 Hz.

We have **not** tested our products with this new sound foam. In fact all our products were tested without the benefit of any acoustical treatments (ask for details). We offer this alternative for the convenience of our customers. Use our foam or your preferred treatment methods - or perhaps use our foam for construction expediency and replace it later with any method you prefer.

We sell the SPW Sound Foam in 54 inch wide rolls for \$20.00 per running foot. Please ask for a sample. We will soon have videos of how simple and easy it is to install.

877-438-7843  
[www.soundproofwindows.com](http://www.soundproofwindows.com)



# NEW

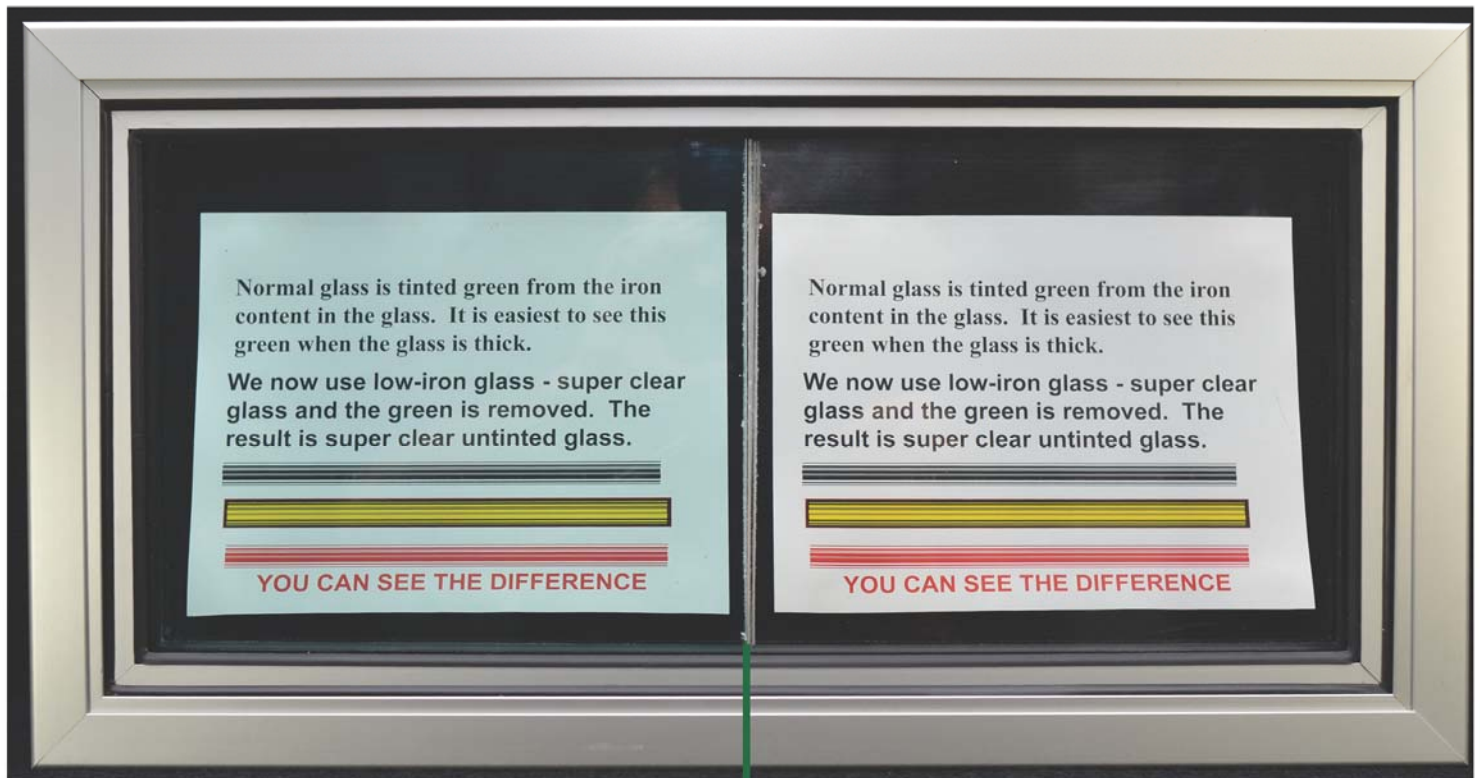
## Super Clear

# GLASS

## No More Green Tint

- Dramatic Improvement
- Almost Invisible Glass
- Stunning Clarity

Studio windows always use thick glass. Since all normal glass has a green tint, all studio windows have always had a green tint to them. Until Now ! We now offer a super clear no-tint glass as our standard glass for recording studio windows, sliding glass doors, and steel doors. Because of our huge purchasing volumes, we are buying this glass for virtually the same cost as our normal glass - so there is no price increase to you.



**Standard Glass (Green)**

**New Super Clear Glass**

This is a picture of the dramatic difference there is when you use low-iron super clear glass. On the left is the normal non-tinted glass. On the right is the super clear glass. You are viewing thru two pieces of 5/8" laminated glass - for a total of 1.25" of glass. Almost all studio windows will have this much glass in their windows or doors. This photo was not photo-shopped, touched up, or altered in any way. The backdrop and lighting is the same for both sides.

**Please note: This clear low-iron glass is VERY new. None of the pictures in this brochure have the super clear glass (except on this page).**



Ask us about our

# Steel Doors

- STC 56
- Standard 1.75" thick
- Uses any hardware

